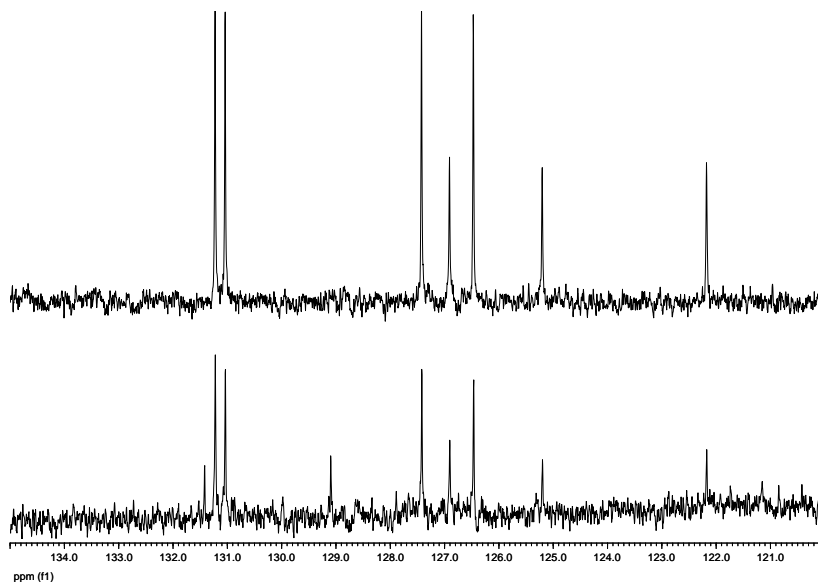


¹H NMR (500 MHz, C₂D₂Cl₄), δ : 8.42 (s, 6H); 7.21-7.02 (m, 30H); 6.89-6.71 (m, 30H) ppm.



¹³C NMR-DEPT (125 MHz, C₂D₂Cl₄), δ : 131.4 (C), 131.2 (CH), 131.0 (CH), 129.0 (C), 127.4 (CH) 126.9 (CH) 126.4 (CH), 125.1 (CH), 122.1 (CH) ppm.

MS (APCI), m/z : 1291.52 (M⁺+1).

HRMS (APCI), m/z : found 1291.5235 (calc. for C₁₀₂H₆₇, calcd: 1291.5237).

Figure S1. Spectroscopic characterization of docecaphenyl[7]starphene